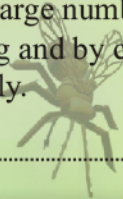




THE POLLINATORS

It is estimated that one third of the human food supply depends on insects as pollinators, most of this is accomplished by bees. One of the sweetest benefits of this is the production of honey.

Visiting flowers is a dangerous occupation with high mortality rates. Many assassin bugs and crab spiders hide in flowers to capture unwary bees. Others are lost to birds in flight. Insecticides used on blooming plants can kill large numbers of bees, both by direct poisoning and by contamination of their food supply.



BEE & FLOWER

Dimensions

Bee

24" L x 16"W x 7"H

Materials

Bodies: Black Walnut & Black Locust
Eyes: Red Cedar
Antennae: Willow

Weight

50 Lbs.

Flower

9'H x 5.5' Diam

Black Walnut and Red Cedar

150 Lbs.

BEE & SKEP

Dimensions

Bee

24" L x 16"W x 7"H

Materials

Bodies: Black Walnut & Black Locust
Eyes: Red Cedar
Antennae: Willow

Weight

50 Lbs.

Skep

3.5'H x 4.5' Diam

Willow On Armature

150 Lbs.

